

Gazing into the future – what will the next 100 years of diabetes innovation look like? A perspective from industry

ZOE CHOLEWA

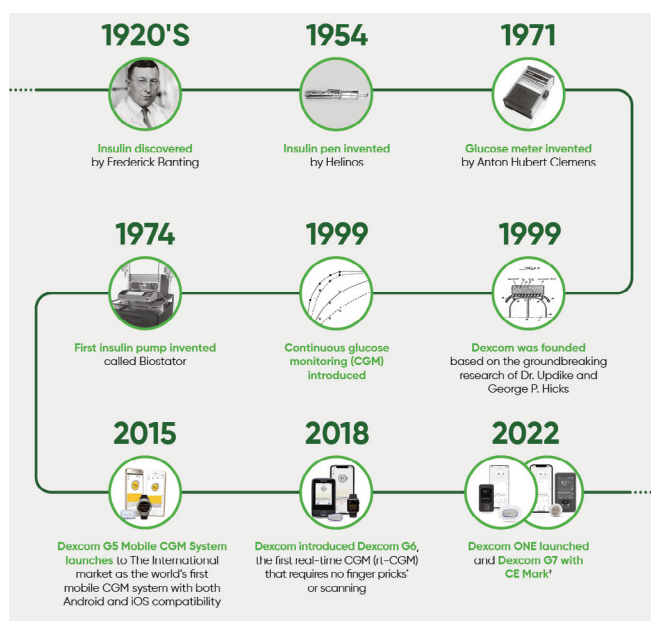
Br J Diabetes 2022;**22**(Sup1):S90-S91

Key words: Real time Continuous Glucose Monitoring, CGM, rt-CGM, Dexcom,

Great leaps of understanding and improvement have been made in the past 100 years (Figure 1), but according to the 2019–2020 national diabetes audit, fewer than 15% of people with diabetes are able to achieve target glucose levels.¹

Fortunately, a new standard of care emerged with real-time

Figure 1. History of technology timeline.

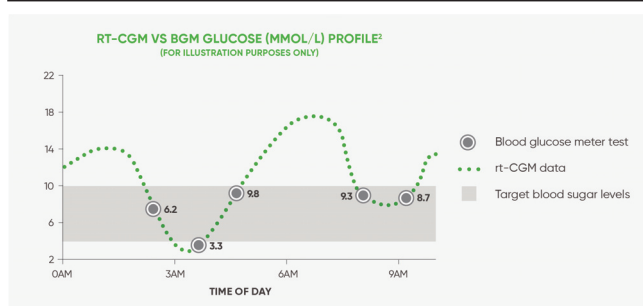


If your glucose alerts and reading from the CGM system do not match symptoms or expectations, please use a blood glucose monitor to make diabetes treatment decisions

Address for correspondence: Zoe Cholewa
Senior Medical Affairs Manager, UK, Ire & Benelux | Dexcom
Dexcom, Unit 2.12/14, Building 3, Watchmoor Park, Camberley,
GU15 3YL, UK
E-mail: zoe.cholewa@dexcom.com

<https://doi.org/10.15277/bjd.2022.375>

Figure 2. Real-time CGM versus BGM reading profile.²



Simon-Kucher & Partners. HCP discussions Nov 2021

Figure 3. The Dexcom portfolio of real-time CGM systems

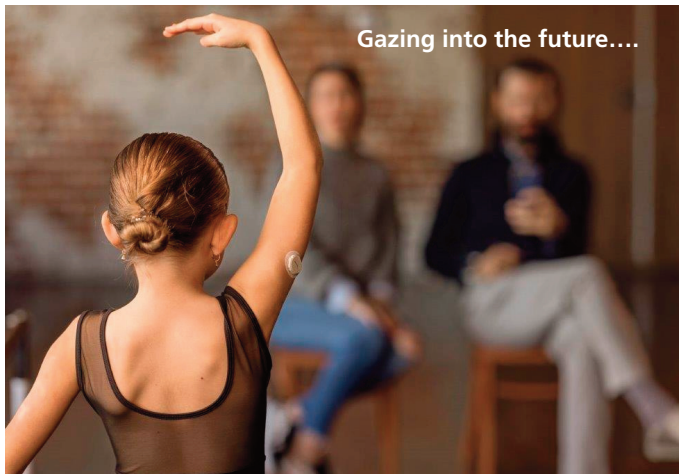


continuous glucose monitoring (rt-CGM) from Dexcom (Figure 2). Dexcom rt-CGM works continuously to measure glucose levels without intervention and helps to minimise guesswork derived from making diabetes treatment decisions based on a blood glucose meter (BGM) reading alone - with no fingerpricks or scanning.

NICE now recommends that people with T1DM are offered a choice of glucose sensor, including rt-CGM.^{3,4} For people with insulin-treated T2DM, NICE now recommends that rt-CGM can be considered as an alternative to intermittent scanning.⁵

Dexcom is increasing access to rt-CGM for people with diabetes with a range of products (Figure 3).

Ultimately, the aim is to offer continuity and reliability for



people with diabetes while delivering clinical and quality-of-life outcomes with lower HbA_{1c}, decreased episodes of hypoglycaemia,⁶ and more efficient clinic visits. The future is looking very exciting for diabetes care. Where will the next 100 years take us?

Conflict of interest None.

Funding None.

References

1. Type 1 diabetes technology: a consensus guideline. <https://digital.nhs.uk/data-and-information/publications/statistical/national-diabetes-audit/national-diabetes-audit-2019-20-type-1-diabetes>.
2. Dexcom. Simon-Kucher & Partners. HCP discussions, November 2021.
3. Type 1 diabetes in adults: diagnosis and management. NICE guideline [NG17]. <https://www.nice.org.uk/guidance/ng17>.



Key messages

- NICE now recommends that people with T1DM are offered a choice of glucose sensor, including rt-CGM.^{3,4}
- For people with insulin-treated T2DM, NICE now recommends that rt-CGM can be considered as an alternative to intermittent scanning.⁵
- Dexcom is increasing access to rt-CGM for people with diabetes with a range of products, Dexcom ONE, Dexcom G6 and Dexcom G7.

4. Diabetes (type 1 and type 2) in children and young people: diagnosis and management. NICE guideline [NG18]. <https://www.nice.org.uk/guidance/ng18>.
5. Type 2 diabetes in adults: management. NICE guideline [NG28]. <https://www.nice.org.uk/guidance/ng28>.
6. Visser MM, Charleer S, Fieuws S, *et al*. Comparing real-time and intermittently scanned continuous glucose monitoring in adults with type 1 diabetes (ALERTT1): a 6-month, prospective, multicentre randomised controlled trial. *Lancet* 2021;**397**(10291):2275–2283. [https://doi.org/10.1016/S0140-6736\(21\)00789-3](https://doi.org/10.1016/S0140-6736(21)00789-3)

Dexcom, Dexcom ONE, Dexcom Follow, Dexcom Share, and Dexcom Clarity are registered trademarks of Dexcom, Inc. in the U.S. and may be in other countries. ©2022 Dexcom International Ltd. All rights reserved. Dexcom International Ltd and its affiliated European entities. This product is covered by U.S. patent. dexcom.com | +1.858.200.0200 Dexcom, Inc. 6340 Sequence Drive San Diego, CA 92121 USA | MDSS GmbH Schiffgraben 41 30175 Hannover, Germany. LBL-1001747 Rev001